



GULLEN RANGE WIND FARM

Community Update No. 3 – July 2008

INTRODUCTION

EPURON has now completed the environmental and engineering investigation for the Gullen Range Wind Farm, and has submitted an Environmental Assessment seeking project approval to the NSW Department of Planning.

This newsletter provides an update on the progress of the project and describes the next steps in the planning process. In particular it outlines the details of the public exhibition of the Environmental Assessment and invites the community to make submissions to the Department of Planning.



Planning Focus Meeting



Photomontage enlargement



View to the south from Pomeroy

DETAILED PROJECT INFORMATION

The Environmental Assessment presents a proposal for a wind farm along an elevated ridgeline system running approximately 22 kilometres north-south. The proposal comprises:

- Up to 84 turbines located on towers up to 85m high and with a maximum tip height of 135m.
- Internal access tracks and underground electrical cabling. Overhead cabling may be required in certain places.
- Minor upgrades to existing roads around the site that provide access; including Range Rd, Grabben Gullen Rd, Gurrundah Rd, Bannister Lane, Prices Lane and Storriers Lane.
- A substation to connect the project to the existing 330kV transmission network with an on-site control and maintenance building.

Did you know?

The Gullen Range Wind Farm will provide enough renewable electricity for the average consumption of 73,500 homes and will reduce greenhouse gas emissions by 588,000 tonnes of CO₂ (equiv) over a typical year.

The Upper Lachlan Shire contains 7,500 people and Goulburn has 22,500 residents in comparison. The average Australian household contains 2.5 people.

RECENT ACTIVITIES

Specialist studies

Studies into the potential impacts from the proposal have been completed. These were undertaken by specialist consultants and included ecology, noise, visual, traffic and transport impacts. The studies show that the wind farm can be built with minimal environmental impacts.

These specialist reports are included in the Environmental Assessment (EA) that will shortly be placed on public exhibition.

Community Consultation

EPURON has undertaken consultation with local residents and stakeholders to ensure that we identify and, where possible, mitigate the potential impacts of the wind farm. A public information day was held at the Grabben Gullen Hall in November 2007 and approximately 85 local residents and interested people attended. Results of the noise assessment and photomontages, showing what the wind farm will look like from various locations, were presented.

Consultation is an ongoing process and the public exhibition of the Environmental Assessment provides an opportunity for comments and feedback to be provided directly to the Department of Planning for their consideration during the assessment of the project.

Epuron continues to welcome feedback in relation to the proposal.



PROJECT BENEFITS

The Goulburn – Crookwell – Yass region has excellent wind speeds and is well positioned to benefit from wind energy production. The project, with 84 turbines, offers a number of direct benefits:

- Clean, renewable energy, with no water used in generation providing enough renewable electricity for the average consumption of 73,500 homes over a typical year
- A better environment for future generations through reduced pollution and reductions in greenhouse gas emissions of 588,000 tonnes of CO₂ (equiv) over a typical year.
- Income, employment and investment opportunities for the Goulburn – Crookwell – Yass region

Community Enhancement Program

To broaden the benefits provided by the wind farm to the local community, EPURON will provide an annual fund of \$75,000 for local environmental and community programs. This is the largest recurring community contribution from a wind farm in Australia.

The Community Enhancement Program includes:

- A Clean Energy Program supporting the installation of residential clean energy improvements; and
- A Community Fund, to provide funds for initiatives which provide direct benefit to the local community.

Under the Clean Energy Program, products including solar water heaters and photovoltaic systems would be offered at significantly reduced rates to residents within 5km of the wind farm. Full details of these programs are included in the Environmental Assessment.

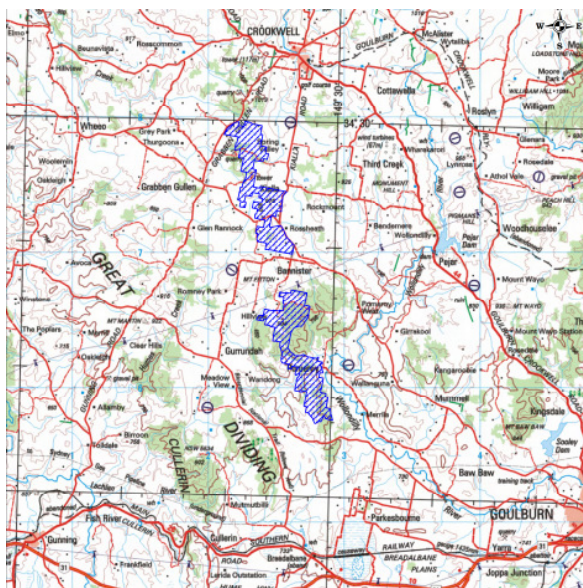


Fig 2. Site location.

PROJECT TIMING

Subject to the approval of the Minister for Planning, construction could commence as early as 2009 with turbine delivery to commence in 2010. This means that the project could begin generating renewable energy as early as 2010 and be in full production by 2011.

Epuron will keep the community informed of progress of the project through regular updates.

HAVING YOUR SAY

What is the process?

EPURON has submitted the proposal under Part 3A (Major Projects) of the Environmental Planning and Assessment (EP&A) Act to the Department of Planning for assessment. The Department will place the Environmental Assessment on public display and will invite the public to provide comments on the proposal.

Public Submissions

The Gullen Range Wind Farm Environmental Assessment will be on exhibition from Monday 4th of August to Friday 5th of September at:

- Upper Lachlan Shire Offices, Crookwell;
- Crookwell Library, Crookwell;
- Goulburn Mulwaree Shire Offices, Goulburn;
- Nature Conservation Council, 301 Kent St, Sydney;
- Department of Planning, 23-33 Bridge St, Sydney.

The EA will also be available on the EPURON and Department of Planning websites.

<http://www.planning.nsw.gov.au>

It is important for the community to voice their views on the project whether you support the project or not, or would just like to make comments. Of particular importance is to make clear the specific issues which concern you. To comment on the Environmental Assessment, please send your submission directly to:

Major Infrastructure Assessments
Department of Planning
GPO Box 39, Sydney NSW 2001
phone: (02) 9228 6284 (inquiries Marek Cholinski)
fax: (02) 9228 6355

Submissions should include your name and address, the name of the project and reference number (MP07_0118) and your statement, including the reasons for your comments.

Submissions close on 5th of September 2008

CONTACT US

Write to us:

Gullen Range Wind Farm
EPURON Pty Ltd
Level 11, 75 Miller St
NORTH SYDNEY NSW 2060

Contact:

Simon Davey, Project Mgr
Phone: (02) 8456 7400
Fax: (02) 9922 6645
Email:

GullenRange@epuron.com.au