



# SILVERTON WIND FARM

Community Update No. 2 – November 2007

## INTRODUCTION

Since the last newsletter was distributed in October, EPURON has been undertaking environmental and engineering investigations into the proposed Silvertown wind farm project. These studies have included ecology, archaeology, visual, traffic and transport, background noise assessment and communications studies.

**This newsletter outlines the details of the proposal and invites the community to an Open House / Information Day. This is an opportunity to discuss the project in more detail and for the community to provide feedback.**

## SILVERTON WIND FARM PROPOSAL

The Silvertown wind farm is proposed on up to 4 properties along the ridgelines of the Mundi Mundi and Mt Robe ranges. No turbines will be located on the Mundi Mundi plains, west of the ranges. The project investigation area is shown in the map below, the blue area shows the entire wind farm area while the red area shows Stage 1. Wind monitoring has proven these ridges to have high and consistent wind speeds. It will provide electricity into the NSW grid via new 220kV powerlines from the east of the site to the Transgrid substation at Broken Hill.

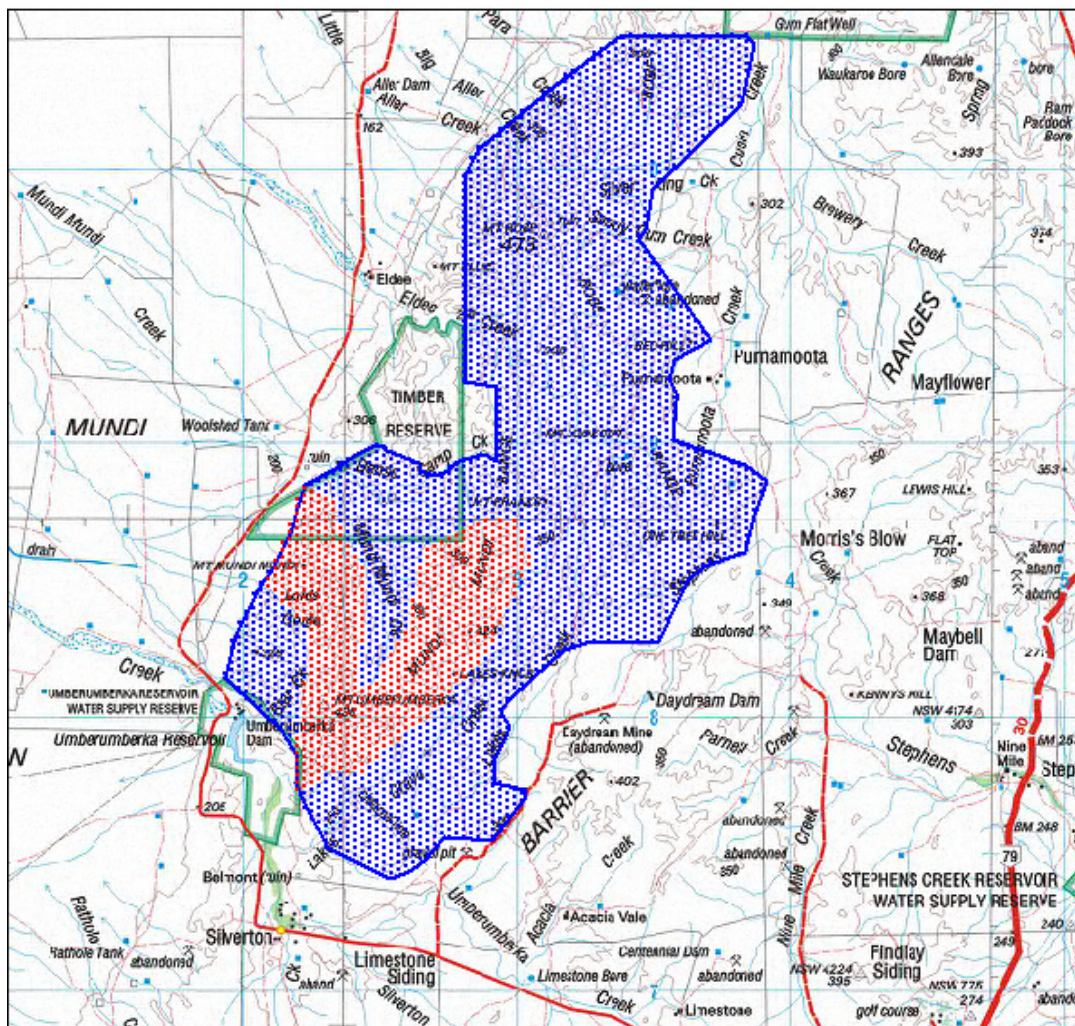


Figure 1 – Project Investigation Area



## DETAILED PROJECT INFORMATION

It is proposed that the Silverton wind farm will comprise:

- Approx 500 turbines located on towers 80 to 100m high and with blades of up to 55m in length.
- Internal access tracks and underground electrical cabling. Overhead cabling may be required in certain places.
- 220kV powerlines from the east of the wind farm site to the Transgrid substation at Broken Hill
- At least one electrical substation on the wind farm site to connect the wind turbines to the new 220kV powerline.
- Additional 220kV powerlines to be built for Stages 2 and 3 of the windfarm from Broken Hill south to Buronga/RedCliffs.

## BENEFITS

Generation of clean, renewable power is required to meet growing demand in NSW and to reduce greenhouse gas emissions from fossil fuels. The Silverton area has excellent wind speeds and is well positioned to benefit from wind energy production.

The project will have a number of benefits:

- Clean, renewable energy, with no water used in generation
- Reduced pollution and greenhouse gas emissions, leading to a better environment for future generations
- Income, employment and investment opportunities for the Silverton/Broken Hill region

The project would provide a number of additional benefits including improvements to power reliability, tourism, and the wider community.

## RECENT ACTIVITY

### *What Have We Been Doing?*

Following the first newsletter in October informing the community of the proposal, we have been undertaking various environmental studies:

- noise modelling;
- visual impact assessment;
- flora and fauna assessments including bird and bat studies;
- television and radio interference assessment;
- Aboriginal and other historic heritage assessment; and

- traffic and transport assessment.

These environmental assessments will feed into the design process to ensure impacts are considered and the project modified accordingly. These studies are being carried out by independent contractors with input sought from the community.

The Environmental Assessment report will summarise the findings of these assessments and form part of the development approval submission to the Department of Planning (Consent Authority). The project will be assessed under Part 3A (Major Projects) of the Environmental Planning and Assessment (EP&A) Act.

## HAVING YOUR SAY

### *Input from the Community*

Our aim is to ensure that we identify and, where possible, mitigate any potential adverse impacts of the wind farm. Before finalising the proposal for submission to the Department of Planning, EPURON wishes to ensure that:

- all relevant issues are considered by EPURON in the assessment of the project; and,
- the community is fully informed and your feedback, and concerns are considered in the proposal.

While we have encountered strong community support for the project, we recognise that opinions in relation to wind farms vary between individuals. The objective of consultation is to determine how to develop the best wind farm possible on this site.

### *Community Information "Open House"*

EPURON is holding an Open House to present the proposal, answer questions and record community feedback. We will have our consultants available to discuss aspects of the project and will have photo montages to show what the project is likely to look like.

Date: 28 November 2007

When 2pm – 7pm, drop in any time

Where Silverton Municipal Hall, Silverton

As Stage 1 of the wind farm is most developed in terms of the design, the open house will concentrate on this Stage. There will also be concept information provided on the entire project .

## CONTACT US

Write to us: Silverton Wind Farm  
EPURON Pty Ltd  
Level 11, 75 Miller St  
NORTH SYDNEY NSW 2060

Contact: Madeline Cowley  
Project Manager  
Phone: 02 9922 7771  
Fax: 02 9922 6645  
Email: [Silverton@epuron.com.au](mailto:Silverton@epuron.com.au)