

Details for CCC meeting No 2
Venue: Linda Gants Coffee Shop
Address: Buccleugh Street, Cassilis
Date: Monday 3 June 2013
Time: 1pm to 4pm

EPURON



Liverpool Range Wind Farm
Community Consultation Committee Meeting No 2
13 May 2013

Presentation Contents for CCC Meeting No 2

1. CCC membership update
2. CCC action items from meeting 1
3. Project overview
4. Development update
5. Current project information
6. Next steps and timing
7. Communications and other information

CCC Membership Update

Membership Group	Representative
Independent Chair	<ul style="list-style-type: none">• Danielle Annells – Twyfords Consulting
Involved Landowners	<ul style="list-style-type: none">• Ant Martin• Anne Louise Capel
Uninvolved Landowners	<ul style="list-style-type: none">• Linda Gant• Greg Piper
Local Councils	<ul style="list-style-type: none">• Tony Meppem – Warrumbungle Shire Council• Councillor Ron Campbell – Upper Hunter Shire Council• Catherine Van Laeren – Mid Western Regional Shire Council• Donna Ausling – Liverpool Plains Shire Council
Local Groups / Associations	<ul style="list-style-type: none">• TBC
Observer	<ul style="list-style-type: none">• Pauline Dunne – NSW OEH (Office of Environment & Heritage)
Proponent	<ul style="list-style-type: none">• Brian Hall - Epuron

CCC Action Items from Meeting 1

- Respond to list of CCC member questions and comments
 - See separate Q&A response document
- Provide general summary of wind farm energy cost documents tabled
 - See separate summary response document
- Display public photomontages from community open day
 - 4 photomontages displayed from Open Day (old layout)
- Provide layouts to Pauline Dunne from OEH for community information sessions
 - Revised layouts available
- Quantify turbines proposed in each council LGA
 - See above Q&A response document for numbers
- Lead discussion around wind farm noise and visual impacts
 - Tim Lam in attendance to lead discussion

Project Overview

- Located on rural land between Coolah and Cassilis with grid connection near Ulan.
- Involves willing landowners and generally supportive local community.
- EA layout revised to accommodate 288 wind turbines and associated infrastructure.
- Based on 3MW turbine will be 864MW project representing \$1.3-1.7 billion investment.
- 5 masts (1 ref mast) monitoring wind across site (up to 3 years data) + 3 Sodars.
- Predicted wind speed and energy yield at hub height supports feasible development.
- Proposed maximum turbine tip height 165m (~100m hub height and ~130m rotor).
- Grid connection at existing Transgrid 330kV transmission line near Ulan.
- Project being assessed as Major Project under Part 3a of EP&A Act 1979.
- Declared Critical Infrastructure Project under Section 75C of EP&A Act 1979.

Development Update

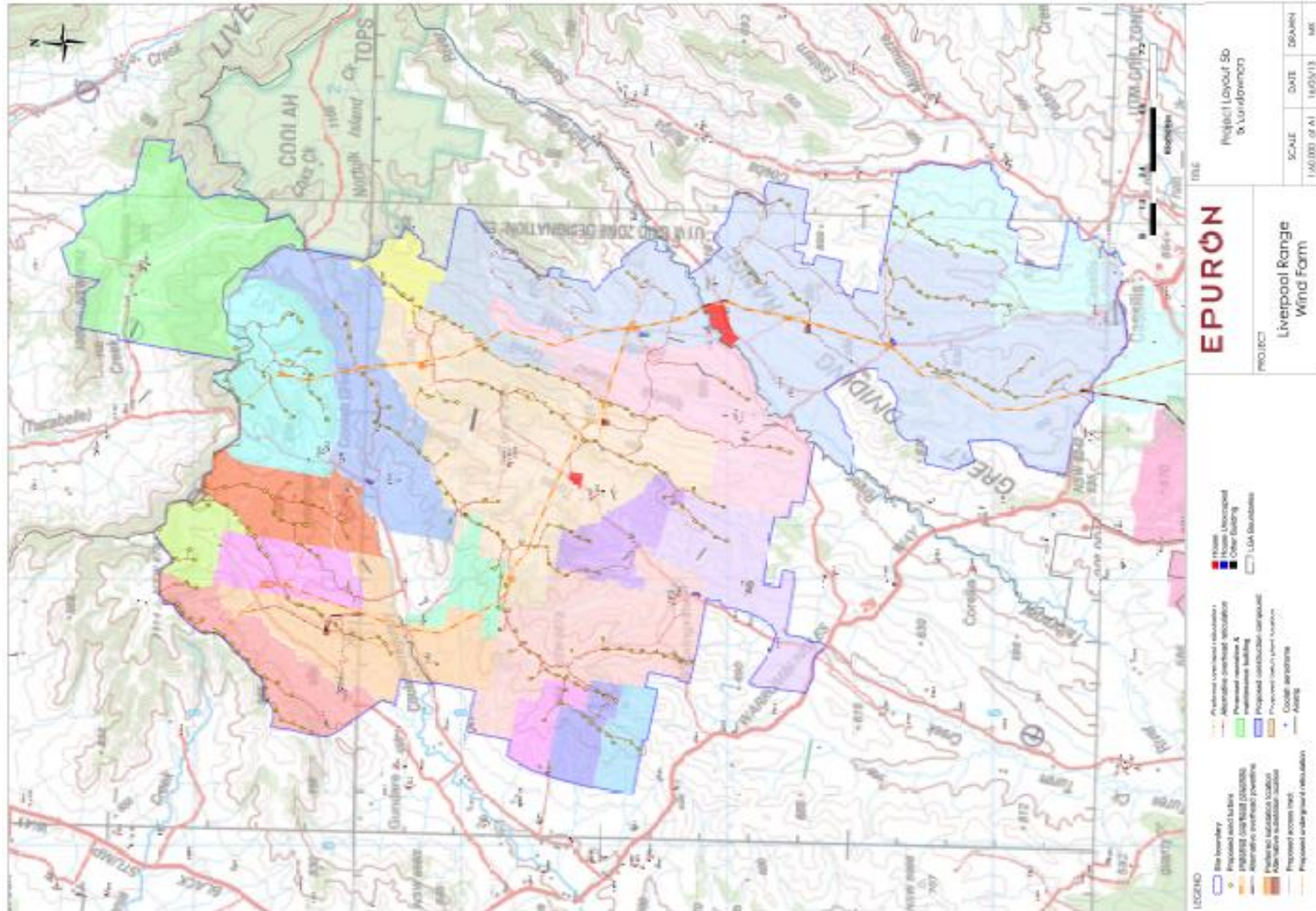
- Latest project Newsletter No 9 released May 2013.
- EA submitted December 2012 and DPI adequacy comments received February 2013.
- Wind farm layout revised to accommodate 288 turbine based on DPI adequacy comments, study results, community feedback and commercial considerations.
- EA and specialist studies to be updated and resubmitted to DPI in coming months for public exhibition and comment prior to determination.
- Progress to secure powerline route continuing successfully. The powerline route has been revised to accommodate community feedback.
- Spring survey planned to commence September/October 2013.
- Transgrid connection enquiry process is ongoing – 330 kV line at Ulan.
- Sponsorship of local sporting referee uniforms.

Development Update

- Updating photomontages based on revised layout of 288 turbines.
 - Public road and powerline locations identified by the LVIA consultant
 - Uninvolved dwellings with 2km of a proposed turbine
- Continuing with background noise monitoring at selected houses.
 - Predicted compliance with standards
- Spring environmental survey will inform completion of Biodiversity Assessment
 - Flora and fauna
- Consulting with authorities including aviation, communication, water and roads.
- Other studies to be updated include;
 - Heritage and Archaeology
 - Traffic and Transport

Current Project Information – Revised Wind Farm Layout

- Wind farm layout revised to accommodate 288 turbines
- Incorporates DPI and community feedback and updated wind assessment
- Studies to be updated prior to EA public exhibition



Current Project Information – Estimate of Likely Benefits to Region

Based on revised wind farm layout of 288 turbines.....

- Project Investment Value \$1.3-1.7 billion based on 864MW project (288x3MW)
- Direct regional investment from construction – \$260m
- Direct regional investment from operations - \$20m per annum for 25-30 years
- Direct jobs during construction – approx 850
- Direct jobs during operations – approx 50
- Regional/state/national flow on effects, jobs and expenditure multipliers – TBC
- Carbon emissions abatement - TBC
- Community Fund – TBC (considered as part of consultation process)

Next Steps and Timing

- Update specialist studies April - June
- EA adequacy update May - July
- Spring survey (Biodiversity) September/October
- EA public exhibition by DPI Q4 2013
- CCC Meeting No 3 September TBC
- Community Open Day During public exhibition

Consultation – Communication and Feedback

- Consultation is a two-way-street and we're always listening
- Feedback and suggestions are important to us
- Available communication channels include;
 - Epuron corporate website: www.epuron.com.au
 - Liverpool project website: www.liverpoolrangewindfarm.com.au
 - Mailing address: Liverpool Range Wind Farm
Level 11, 75 Miller Street
North Sydney...NSW...2060
 - Phone: 02 8456 7400
 - Fax: 02 9922 6645
 - Email: liverpoolrange@epuron.com.au
 - Senior Project Manager: Brian Hall
b.hall@epuron.com.au
 - Meetings Arranged by appointment

Consultation - General Reference Documents

- NSW Draft Wind Farm Planning Guidelines - December 2011
- NHMRC (National Health & Medical Research Council) Review of Wind Turbines & Health - July 2010
- NSW Valuer General - Impact of Wind Farms on Property Values – August 2009
- DECCW (NSW Department of Environment, Climate Change & Water - Community Survey: “Community Attitudes to Wind Farms” – December 2010
- Clean Energy Council - Wind Farm Investment, Employment and Carbon Abatement in Australia (SKM) – June 2012
- EPA South Australia – Wind Farms and Infrasound - January 2013
- VIC Department of Health – Wind Farms, Sound and Health - May 2013

Thank You

Example of photomontage on display (1 of 4) at CCC meeting 2



Photomontage PM17 – Corner of Rotherwood Road and Coolah Road – Nearest turbine 3.4km (old layout)

Liverpool Range Wind Farm
Photomontage PM17
On at Rotherwood Rd & Coolah Rd
near at Coolah
Horizontal Field of View: 120°
bearing 162° (SWW)
Distance to Nearest Turbine: 3.4km

EPURON Pty Ltd

75 Miller Street
North Sydney
NSW 2060
AUSTRALIA

T +61 2 8456 7400
F +61 2 9922 6645

www.epuron.com.au

**PLEASE SEND US
YOUR FEEDBACK
info@epuron.com.au**